



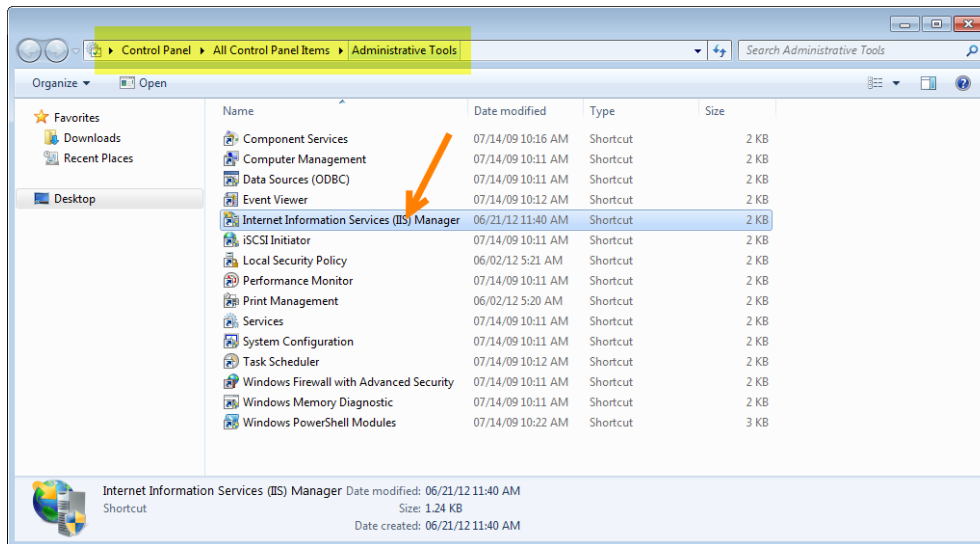
How to configure idle time-out setting for IIS?

To change the IIS idle time out, follow the steps below.

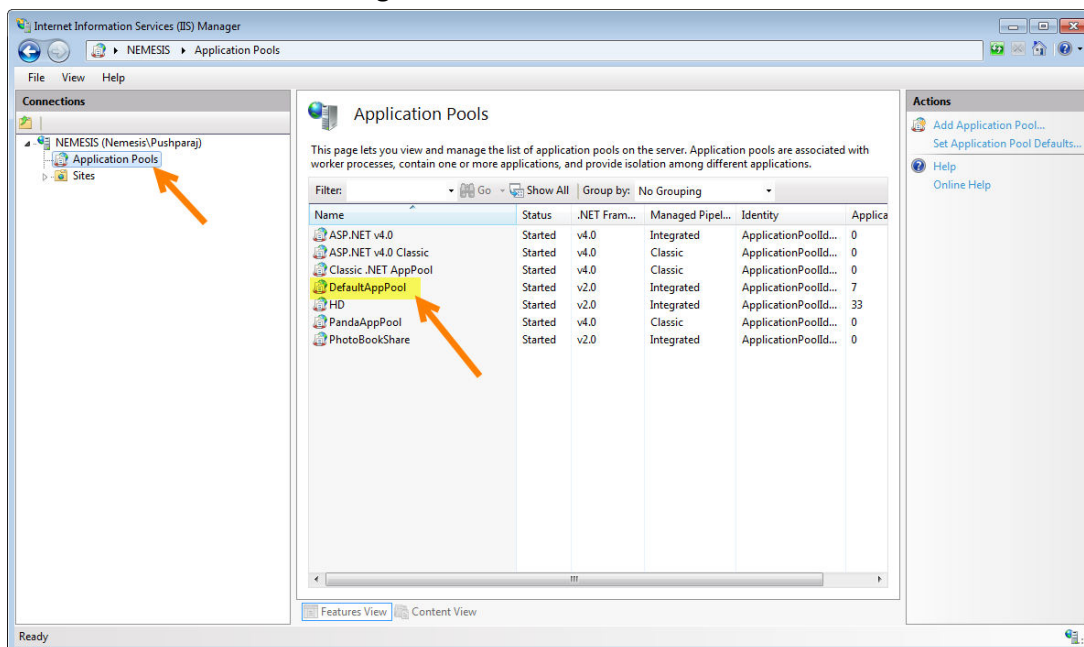
For IIS 6 and later versions:



1. Click on **Start** button .
2. Go to **Control Panel**. Click on **Administrative Tools**.
3. Double click on **Internet Information Services (IIS) Manager**.

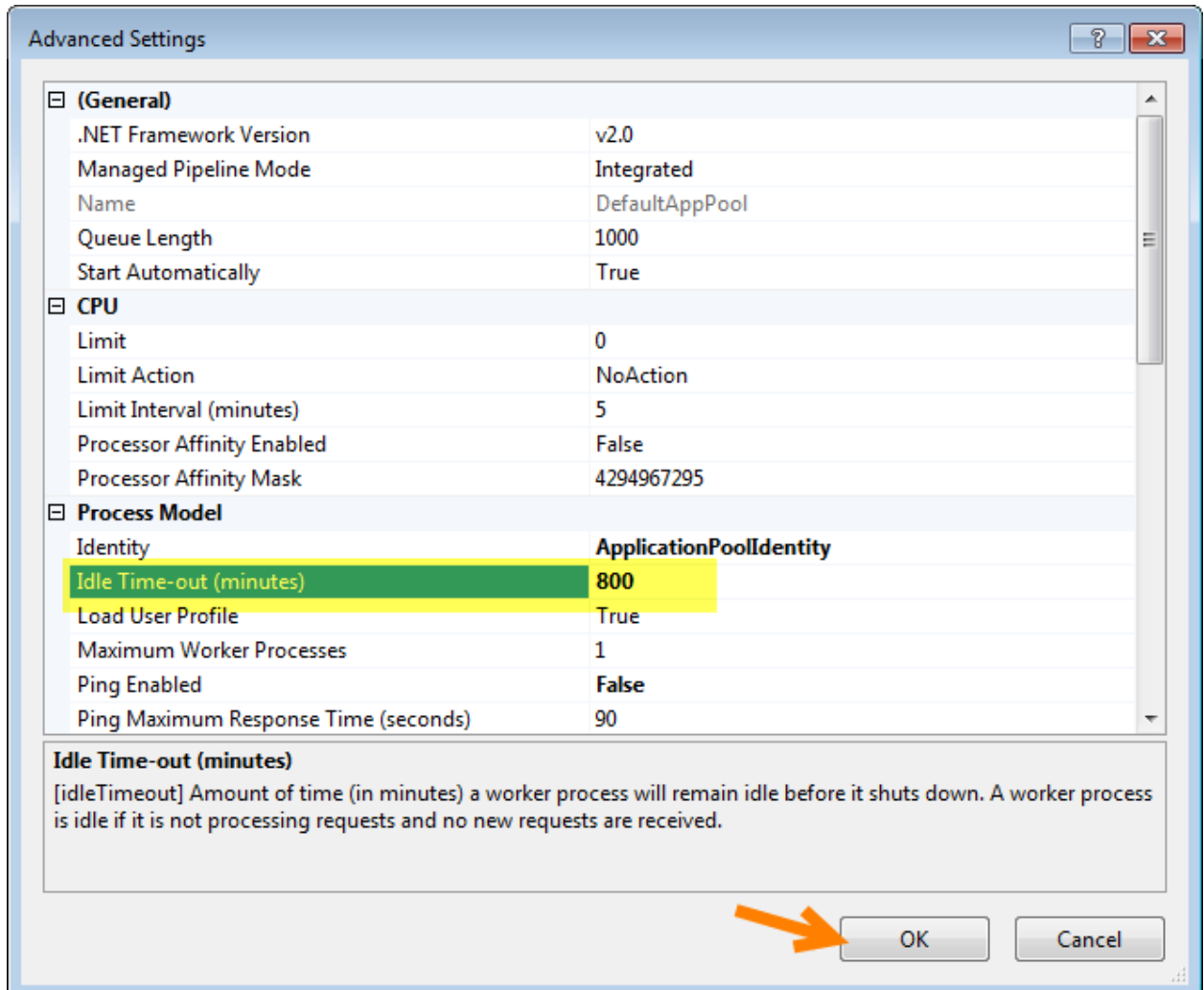


4. In the left panel of the screen, click on top node. You will see **all Application Pools**.
 - Select the **Application Pools**. It will display all the Application pools in the right panel.
 - Select **Default App Pool** from right panel. From the last panel, you will see **Advanced Settings**.
 - Select **Advanced Settings**.





5. You will see a dialog box of **Advanced Settings** as shown below.
- Select the field of **Idle Time-out (minutes)**. By default the value will be 20.
 - Change the value for Idle Time-out (minutes) to “800” or above.
 - Click on **OK** button.



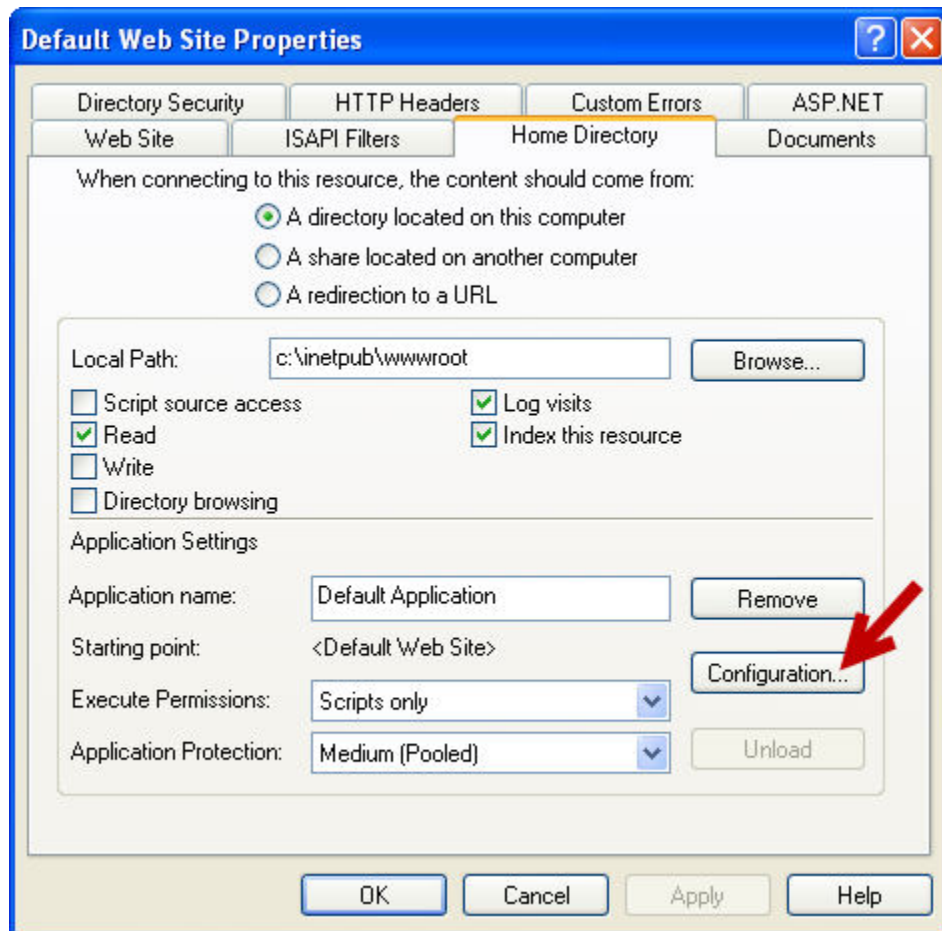


For IIS 5:

You can follow the same steps that are given above. But instead of selecting Advanced Settings, you have to select Properties.

You can find the properties window as shown below.

- From **Properties** window, click on **Home Directory** tab.
- Click on **Configuration** button.



- You will see **Application Configuration** window as shown below.
- Click on **Options** tab.
- Set the value of session timeout from 20 to 800 or more.



Application Configuration [X]

Mappings Options Debugging

Application Configuration

- Enable session state
Session timeout: 20 minutes
- Enable buffering
- Enable parent paths
- Default ASP language: VBScript
- ASP Script timeout: 90 seconds

OK Cancel Apply Help