

What to do when you forget the password of HDPOS smart?



HDPOS smart Tutorials

HDPOS smart comes with the following default login credentials

User Name: HDAdmin

Password: @HDAdmin

While the passwords for user-defined logins can be changed by the admin in the access rights window, the same cannot be done when the password for admin account is forgotten.

The steps to reset the password for **HDAdmin** are as follows:

1. Enter the username as **HDAdmin**

The screenshot shows the HDPOS smart login interface. At the top, there is a red shopping cart icon followed by the text 'HDPOS smart' and 'Hyper Drive Information Technologies Private Limited'. Below this, there are two input fields: 'User Name:' with the text 'HDAdmin' and 'Password:' which is currently empty. At the bottom of the form, there are two buttons: 'OK' and 'Cancel'. A small 'HYPER DRIVE' logo is visible in the bottom left corner.

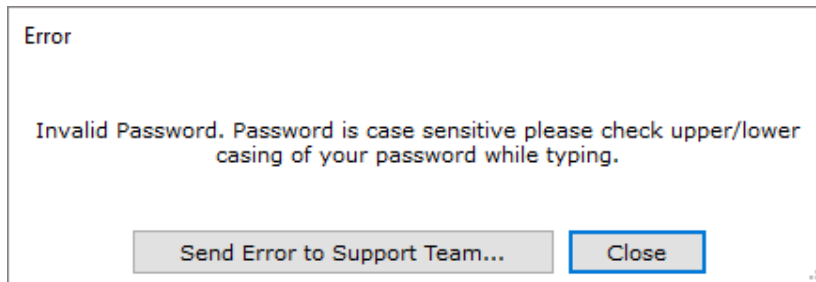
2. Enter the guessed password, or simply enter a random password, and click on **OK**

This screenshot shows the same HDPOS smart login interface as the previous one. The 'User Name' field now contains 'hdadmin' and the 'Password' field is filled with a series of black dots, indicating a password has been entered. A red arrow points from the bottom left towards the 'OK' button. The 'OK' and 'Cancel' buttons are still present at the bottom. The 'HYPER DRIVE' logo is also visible in the bottom left corner.





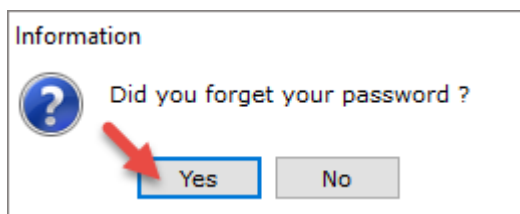
- An error message is displayed informing you that it was an invalid password. Click on **Close**



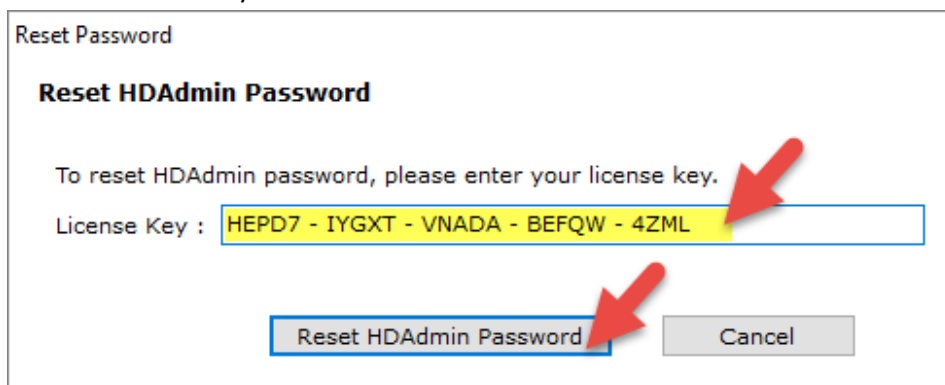
NOTE: You can click on **Send Error to Support Team** button to send your error and contact details to our support team. They will revert to you with required information.

- Repeat steps (2) and (3)

- Click on **Yes**

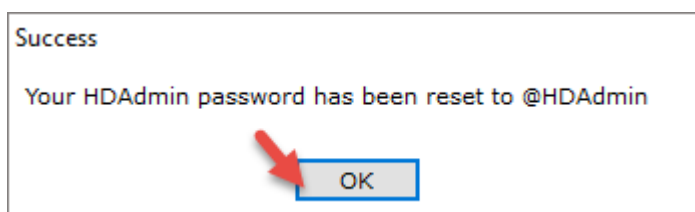


- Enter the license key and click on **Reset HAdmin Password** button



(License key of the server needs to be entered in case of the client-server application)

- A success message is displayed confirming that the password for 'HAdmin' has been reset. Click on **OK**



- You can now login to the application using the default login credentials.

